



Indoor & Digital Transfer



High Quality Dye Sublimation Printer

Mutoh's new XpertJet 1682WR 64" (162 cm) wide dye sublimation printer will deliver exceptional performance and great value. As the successor to Mutoh's popular ValueJet 1638WX, the 1682WR sits on our brand new XpertJet print platform and is ideally suited to interior décor, custom apparel, soft signage, sportswear, personalised promotional products, giftware and more.

Cleverly designed, the XpertJet 1682WR features multiple product enhancements which will deliver optimum quality results and an excellent user experience. A newly developed multi-stage pressure roller system will enhance media feed stability for a wide range of sublimation papers. Rolls can be easily installed thanks to a new roll off system and newly developed media flanges. Continuous printing is made possible with the different motorized take-up systems available for roll weights up to 30, 40 or 100 kg.

Product Highlights

- The successor to Mutoh's award winning ValueJet 1638WX
- Transfer sublimation printing up to 1625 mm (63.97")
- Two gold plated piezo drop on demand heads on board, drop sizes from 3.6 pl to 35.6 pl
- Typical production speeds between 10 m²/h and 48 m²/h
- 2x4 or up to 8 colour setup
- Enhanced media handling & transport
- 30, 40 or 100 kg motorized take up systems
- Environmentally friendly printing - high level of operator safety

Application Possibilities

In-store textile décor graphics and displays, personalised home decoration, textile banners, fast fashion, shirts and sportswear and much more. Personalised products on all types of polyester coated or polyester based rigids, gadgets and flexible materials.





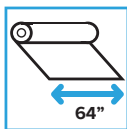
Made in Japan



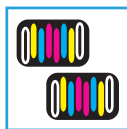
Piezo Variable Drop



Intelligent Interweaving



64" Wide



Dual Head

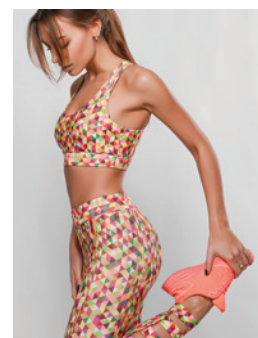
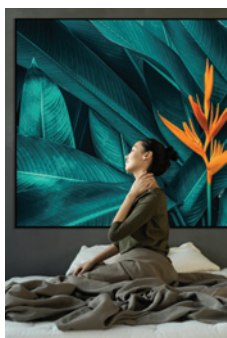


64" Dye Sublimation Printer



Excellent user experience and optimum quality outputs

- High precision aluminium rail mechanism for extremely accurate ink dot placement and stable printing
- Improved media feed mechanism with newly designed media feed flanges and multi-level pinch rollers with adaptable pressure and individual disable function for worry-free media transport
- Illuminated print platform and new intuitive OLED display
- Mutoh Intelligent Interweaving on board to deliver spot on print quality
- Automated bi-directional alignment and media feed adjustment via built-in colour sensor.
- Media Tracker feature to easily track remaining media left on a part-used roll



Technical Key Specifications

| | |
|----------------------|--|
| Print Technology | Drop-on-demand Micro Piezo Inkjet Technology |
| Print Head | 2 (staggered setup) |
| Nozzle Configuration | 180 nozzles x 8 lines / head |
| Drop Mass Range | 2.8 to 33.9 pl |
| Resolution Range | 360 x 360 dpi up to 1440 x 1440 dpi |
| Head Heights | Low: 1.5 mm / Middle: 2.5 mm / High: 4.0 mm |

Media Specifications

| | |
|----------------------|------------------------------------|
| Media Width | 500 mm (19.96") - 1625 mm (63.97") |
| Max. Print Width | 1615 mm (63.58") |
| Max. Media Thickness | 0.3 / 1.3 / 2.8 mm * |

* : Max. media thickness is specified per head height

| Compatible Roll Diameter | 30 kg | 40 kg | 100 kg |
|--------------------------|-------|---------|--------|
| Roll-off (mm) | Ø 150 | Ø 150 | Ø 250 |
| Take-Up (mm) | Ø 150 | Ø 250 * | Ø 250 |

* : Standard converted rolls may increase in diameter and weight during printing. To handle full rolls from start to end, a winder 40 kg is recommended.

| | |
|-------------------------------|---------|
| Media Core Compatibility | 2" & 3" |
| Automatic Sheet-off Mechanism | Yes |

Power Consumption

| | |
|-------------------------|--------------------------------------|
| During Printing | 180 W |
| in Stand-by / Power Off | 40 W / 1 W |
| Power Supply | AC 100-120 V / AC 200-240 - 60/50 Hz |
| Noise (dB) | ± 70.4 (printing) / ± 64.2 (standby) |

Machine Measurements

| | |
|------------------------|----------------------|
| Width x Depth x Height | 2698 x 885 x 1261 mm |
| Weight | 219 kg |

Recommended Printing Environment

| | |
|-------------|---|
| Temperature | 20 °C - 30 °C with Δt: max. 2 °C/h |
| Humidity | 40 % - 60 % RH (no condensation) with ΔRH: max. 5 % RH/h |

Distributed by

id numérique