

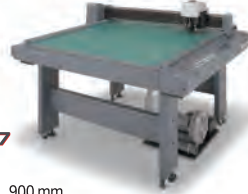
PICT allows users to monitor printer operation and ink usage remotely. It supports better planning by providing real-time data on operational status and performance. PICT helps with scheduled maintenance and preparing for ink refills, ensuring smooth and efficient production.



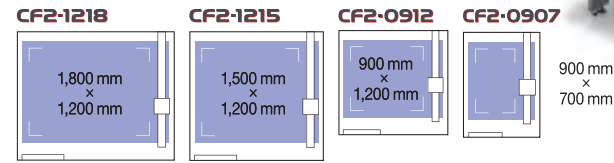
Expand its potential and capabilities with our cutting machines.

Choose from four available sizes to suit your space allocation and application needs.

**CF2 Series**  
CF2-T/TF/RT/TD/RC



A wide range of sizes and head types are available, along with customization options. Please contact your local Mimaki dealer for more information.



■ Specifications

Item	Specifications	
JFX200-1213 EX		
Head	On-demand piezo head (3 staggered printheads)	
Print resolution	300 dpi, 450 dpi, 600 dpi, 900 dpi, 1,200 dpi	
Ink	Type/Colour	Hard UV curable ink LH-100
		Flexible UV curable ink LUS-120 / LUS-150 / LUS-211 / LUS-350
	Capacity *1	1 L bottle / 250 ml bottle
	Ink circulation system *2	White ink circulation by MCT (Mimaki Circulation Technology)
Max. Printable area (W x D)	1,270 mm x 1,300 mm	
Media	Size (W x D)	1,270 mm x 1,300 mm
	Height	Up to 50 mm (Up to 102 mm with the optional lift-up block)
	Weight	50 kg/sqm (110.2 lb/sq. ft2) or less (non concentrated load)
Media suction		Vacuum suction + foot switch
	Suction areas	2 partition (X direction)
UV method	LED-UV	
Interface	USB, Ethernet	
Applicable standards	VCCI class A, CE mark, CB report, U.S. safety standard UL (UL62368-1), RoHS Directive, FCC Class A, Machinery Directive, EAC, RCM	
Power	Single-phase AC200 to 240 V, 50/60 Hz, 12 A or lower	
Power consumption	2.88 kVA	
Operating environment	Temperature	15 - 30°C
	Humidity	35 - 65 %Rh
	Optimal temperature	20 - 25°C
	Temperature gradient	Less than ± 10°C / h
	Dust	Equivalent to an office
Assembled dimensions (WxDxH)	3,142 mm x 2,320 mm x 1,235 mm	
Weight	510 kg	

■ Optional Accessories

Item No.	Item	Remarks
OPT-J0348	Optional blower Connector Kit	Necessary kit for connecting an optional vacuum unit
OPT-J0216	Vacuum unit (φ3 mm x 200 mm (φ 0.1 in. x 7.9 in.))	Three-phase, 200 V-240 V, 30 A, 3.4 kW
OPT-J0217	Vacuum unit (φ1 mm x 200 mm (φ 0.04 in. x 7.9 in.))	Single-phase, 200 V-240 V, 30 A, 1.9 kW
OPT-J0232	Vacuum unit (φ3 mm x 400 mm (φ 0.1 in. x 15.7 in.))	Three-phase, 380 V-480 V, 20 A, 3.4 kW
OPT-J0499	4C+4White ink applying kit	Necessary kit for 4C+4White ink set
OPT-J0513	Lift-Up Block	
OPT-J0569	Ionizer kit	

About Ethernet

\*Please use Category 6 (CAT6) network cables. \*Cannot be connected through the router.  
 \*When printing from ethernet, place the printer and output PC on the same network.  
 \*When using a switching hub, a 1000BASE-T compatible hub is necessary.  
 \*Although up to 4 printers can be registered with RasterLink7, printing may stop depending on the network environment.

⚠ Inks and substrates:

- As physical properties of ink (adhesion, weather resistance etc.) are different depending on media, please be sure to have a print test in advance.
- Depending on the application, primers, other surface treatment or surface protection such as lamination may be necessary.

⚠ Safety notice:

- This product is equipped with UV irradiation equipment. Please pay attention to the following notes in order to use safely.
- Do not look directly into the UV light source nor place your hand, or expose your skin directly to the UV light source.
  - Depending upon print mode, some VOC emissions from printed parts not yet cured and hardened may occur.
  - In addition, please be sure to read and follow the instructions and guidelines of the manual carefully.

• Some of the samples in this catalog are artificial renderings. • Specifications, design and dimensions stated in this catalog may be subject to change without notice (for technical improvements, etc). The corporate names and merchandise names written on this catalog are the trademark or registered trademark of the respective corporations. • Inkjet printers print using extremely fine dots, so colours may vary slightly after replacement of the printing heads. Also note that if using multiple printer units, colours could vary slightly from one unit to other unit due to slight individual differences.  
 • The specifications described in this catalog are as of September 2024.

■ Supplies

	Color	Item No.	Remarks
LH-100	Cyan	LH100-C-BA	Ink package: 1 L bottle
	Magenta	LH100-M-BA	
	Yellow	LH100-Y-BA	
	Black	LH100-K-BA	
	Light cyan	LH100-LC-BA	
	Light magenta	LH100-LM-BA	
	White	LH100-W-BA	
	Clear	LH100-CL-BA	
LUS-120	Cyan	LUS12-C-BA	Ink package: 1 L bottle
	Magenta	LUS12-M-BA	
	Yellow	LUS12-Y-BA	
	Black	LUS12-K-BA	
	White	LUS12-W-BA	
	Clear	LUS12-CL-BA	
LUS-150	Cyan	LUS15-C-BA	Ink package: 1 L bottle
	Magenta	LUS15-M-BA	
	Yellow	LUS15-Y-BA	
	Black	LUS15-K-BA	
	Light cyan	LUS15-LC-BA	
	Light magenta	LUS15-LM-BA	
LUS-350	Cyan	LUS35-C-BA	Ink package: 1 L bottle
	Magenta	LUS35-M-BA	
	Yellow	LUS35-Y-BA	
	Black	LUS35-K-BA	
	White	LUS35-W-BA	
	Clear	LUS35-CL-BA	
Primer *3	PR-200	PR200-Z-BA	
Tungsten replacement needle for ionizer		SPA-0208	4pcs.

\*1: LH-100, LUS-120 and PR-200 come in both 250 ml and 1 L bottles.  
 \*2: MCT works only with white ink.  
 \*3: The PR-200 is not compatible with LUS-211 and LUS-350.  
 \* As the stretchability of flexible ink may vary depending on materials, please have a prior test print.  
 \* LH-100, LUS-120 and LUS-150 are GREENGUARD Gold certified ink.

For INDUSTRIAL PRODUCTS

LED-UV Curing Flatbed Inkjet Printer



# JFX200-1213 EX

## Just In Size



Mid-sized flatbed (up to 1270 mm x 1300 mm)

Industry's highest class productivity of up to 25 m<sup>2</sup>/h

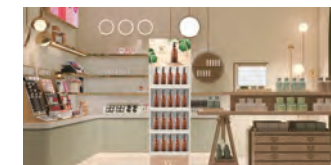
Even faster texture printing

High image quality printing

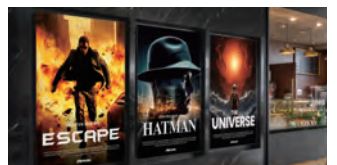
### Single unit, various applications.



Pictograms



Displays



Commercial signage



Braille signs



Information boards



Packaging



**MIMAKI EUROPE BV**

Stammerdijk 7E, 1112 AA Diemen, The Netherlands  
 www.mimakieurope.com | Tel. : +31 20 4627640  
 @MimakiEurope



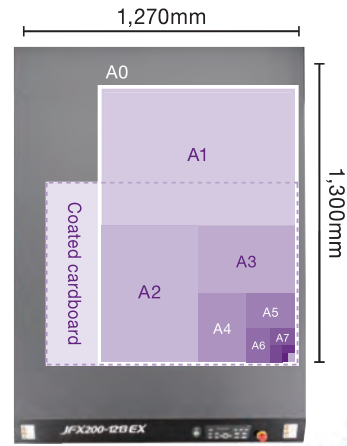
# 01 Mid-sized flatbed (up to 1270 mm x 1300 mm)

Single unit - sign graphics & paper packaging print capability

30% more compact than the JFX200-2513 EX model.

Supports all A-series media sizes

- Sign graphics use supports A0 size signage panels.
- Paper and packaging supports standard coated cardboard sizes.



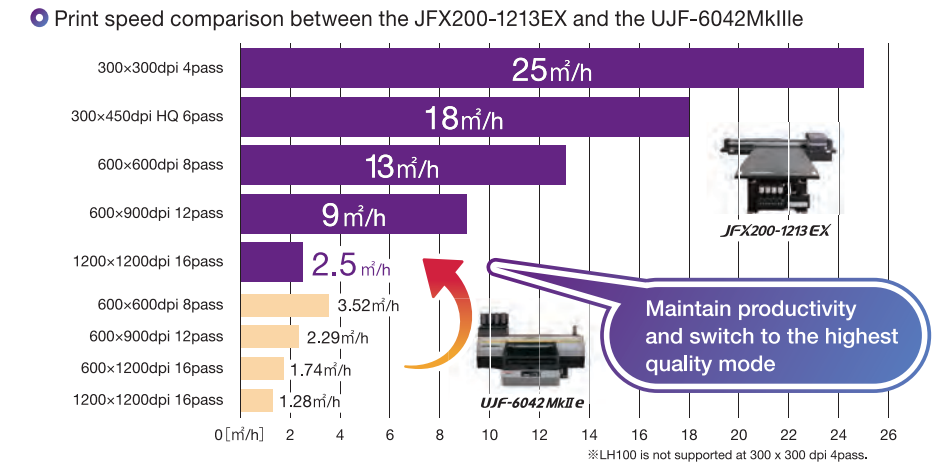
# 4 Key features



JFX200-1213 EX

# 02 max. 25m<sup>2</sup>/h Highest-in-class productivity

The perfect upgrade from your desktop UV printer



# 03 Even faster texture printing

Fast, attractive, and easy – added-value texture printing

Faster Braille printing with two different modes to suit various applications. Easily achievable using standard design software and RasterLink7, instantly turning your textured designs into reality.

High-speed Braille printing made possible by Mimaki's cutting-edge flatbed technology.



Braille (Standard mode)



Braille (High-speed mode)



Braille signs

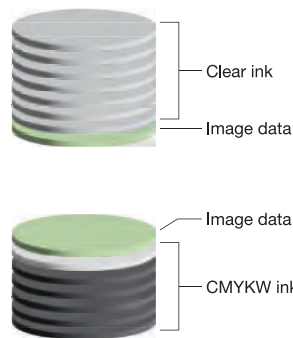
2.5D printing that creates realistic embossed effects.



Automatically generates texture layering data from graphic information in RasterLink7. This process applies UV ink in layers to produce textured effects, with thicker layers resulting in more pronounced bumps and dips.

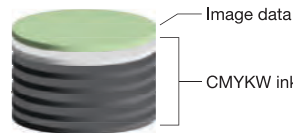
### Standard mode

The Braille sign is created using clear ink embossing, ensuring that the transparent Braille dots do not interfere with the underlying graphic

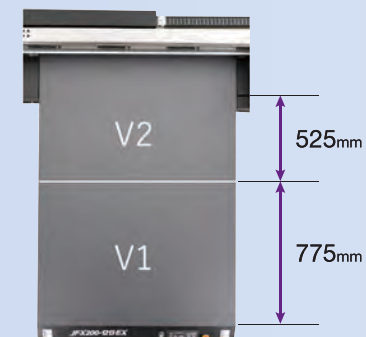


### High-speed mode

High-speed texture printing is achieved with bi-directional printing, utilised for braille and pictograms.



# Operator-friendly user interface



### Valve and foot switch for vacuum control

The vacuum area is divided into a front section and a rear section. The valve can be used to switch between them easily depending on the media size. The foot switch allows you to turn the vacuum on/off while checking the media location.



Vacuum valve



Foot switch

### Ink tank unit

The ink bottles can be accessed from the front side of the printer for replacement and maintenance. This minimizes the pathway to be followed by operators, increasing work efficiency.



Ink tank unit (when pulled out)

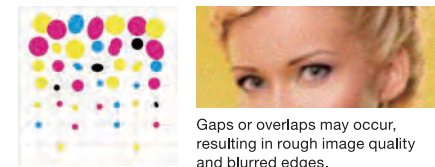
# 04 High image quality printing

Mimaki's advanced imaging technology realizes smooth gradation and high density print.

### Waveform control (WCT)

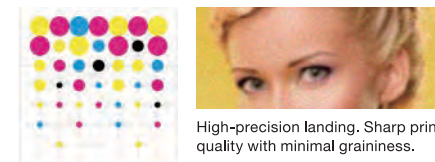
WCT enables ink drops to be ejected in near-perfect circles, landing precisely on the media. This improved accuracy ensures sharp reproduction of edges, characters, and ruled lines.

#### [Without Waveform Control]



Gaps or overlaps may occur, resulting in rough image quality and blurred edges.

#### [With Waveform Control]

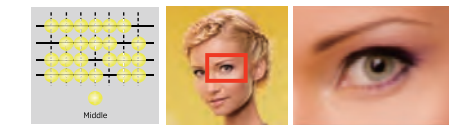


High-precision landing. Sharp print quality with minimal graininess.

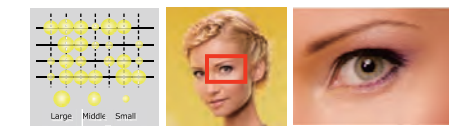
### Variable dots

Three different ink dot sizes are used in printing to enable high-quality prints with reduced graininess.

#### [Fixed Dot Image]



#### [Variable Dot Image]

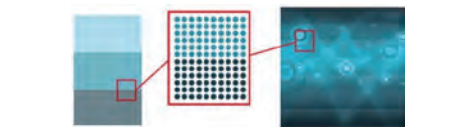


Dots are combined including the minimum size of 5 pl to enable grainless, smooth colour printing.

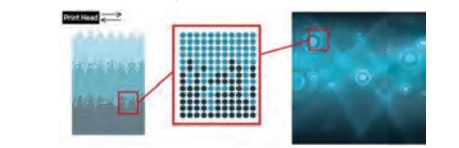
### MAPS (Mimaki Advanced Pass System)

Banding (horizontal stripes), uneven colour, or glossy streaks can be reduced to produce smooth prints by printing pass boundaries fading in gradation.

#### [Without MAPS (Image)]



#### [With MAPS (Image)]



Based on printing conditions such as media/ink type and resolution, the most suitable gradation pattern is automatically selected and printed.

# Mimaki's core technologies for stable operation

Auto maintenance functions to minimize downtime

